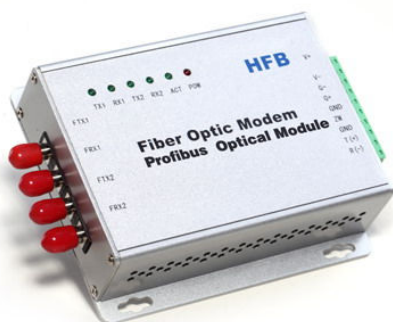


# HFB-FO-PRO Series

## Profibus Multi-Drop Bus Fiber Optic Converter(OLM)



### Product Description

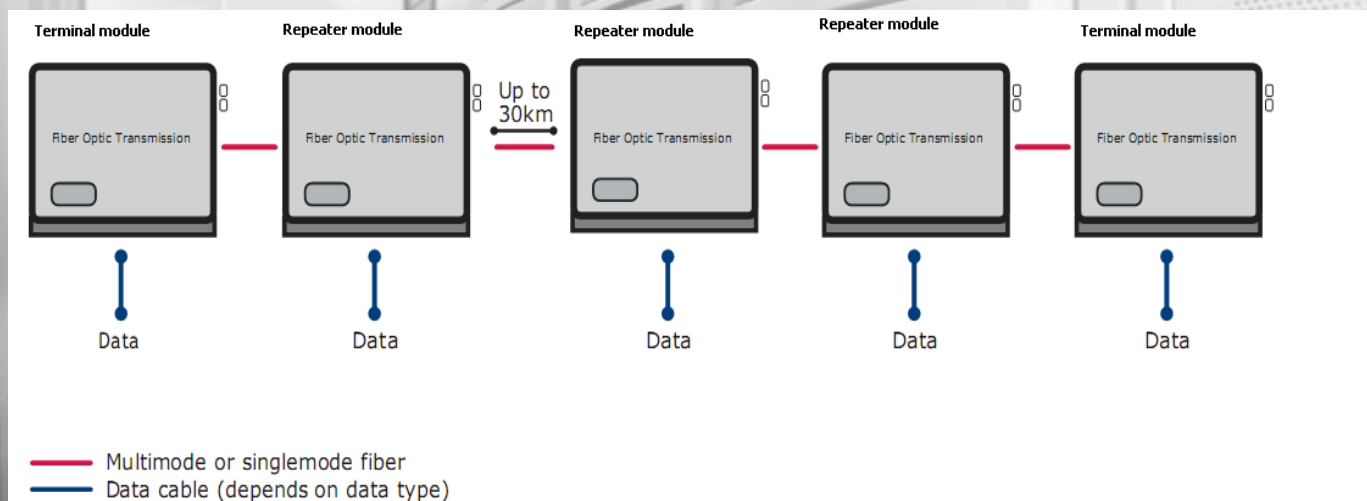
The HFB series Profibus Multi-Drop Bus Fiber Optic Modem series products provide an optical bus network for Profibus, data interfaces over a pair of multimode or single mode optical fibers. The Terminal module units operate as the end or terminal points and provide an electrical connection and a two fibre optical connection. The Repeater module units act as in-line repeater stations and provide a single electrical connection and two optical connections, one upstream and one downstream.

This series is available in either wall mount, DIN rail or 2U chassis card configurations.

### Product Features

- ◆ Multimode and single mode solutions
- ◆ Single or dual fiber solution
- ◆ Single or dual redundant power supply solution
- ◆ DIN Rail mount
- ◆ 5 years warranty

### Typical System Configuration



## Specifications:

Data	
Data Formats	Siemens Profibus RS-485
Data Rate	0~1.5Mb/3Mb/6Mb/12Mb
Bit Error Rate	<1 x 10 <sup>-12</sup>
Connectors	
Data	Terminal
Fiber	ST, SC or FC (ST fitted as standard)
Environmental	
Operating Temperature	-30C---+70C
Storage Temperature	-40C---+90C
Operating Humidity	0-95%
MTBF	>100,000 Hours
Optical	
Fiber	Multi mode or Single mode
Wavelength	MM:850nm,SM:1310nm
Number of fibers	2 or 4(WDM,Bi-Di)
POWER	
Power Input	AC 220V 110v or DC+110V,+5V,+12V,+24V,+48V Option
Mechanical	
Dimensions	125(L)×110(W)×36(H)mm Wall Mount & DIN Rail

## Ordering Information:

Model Number	Description	Fiber No.	Fiber Mode	Fiber Connector
HFB-FO-PRO-M2M	Multi Drop Link,Dual Fiber(BI-DI), 2km	2	Multi Mode	ST/SC/FC
HFB-FO-PRO-M4M	Multi Drop Link,4 Fiber, 2km	4	Multi Mode	ST/SC/FC
HFB-FO-PRO-M2S	Multi Drop Link,Dual Fiber(BI-DI), 20km	2	Single Mode	ST/SC/FC
HFB-FO-PRO-M4S	Multi Drop Link,4 Fiber, 20km	4	Single Mode	ST/SC/FC

